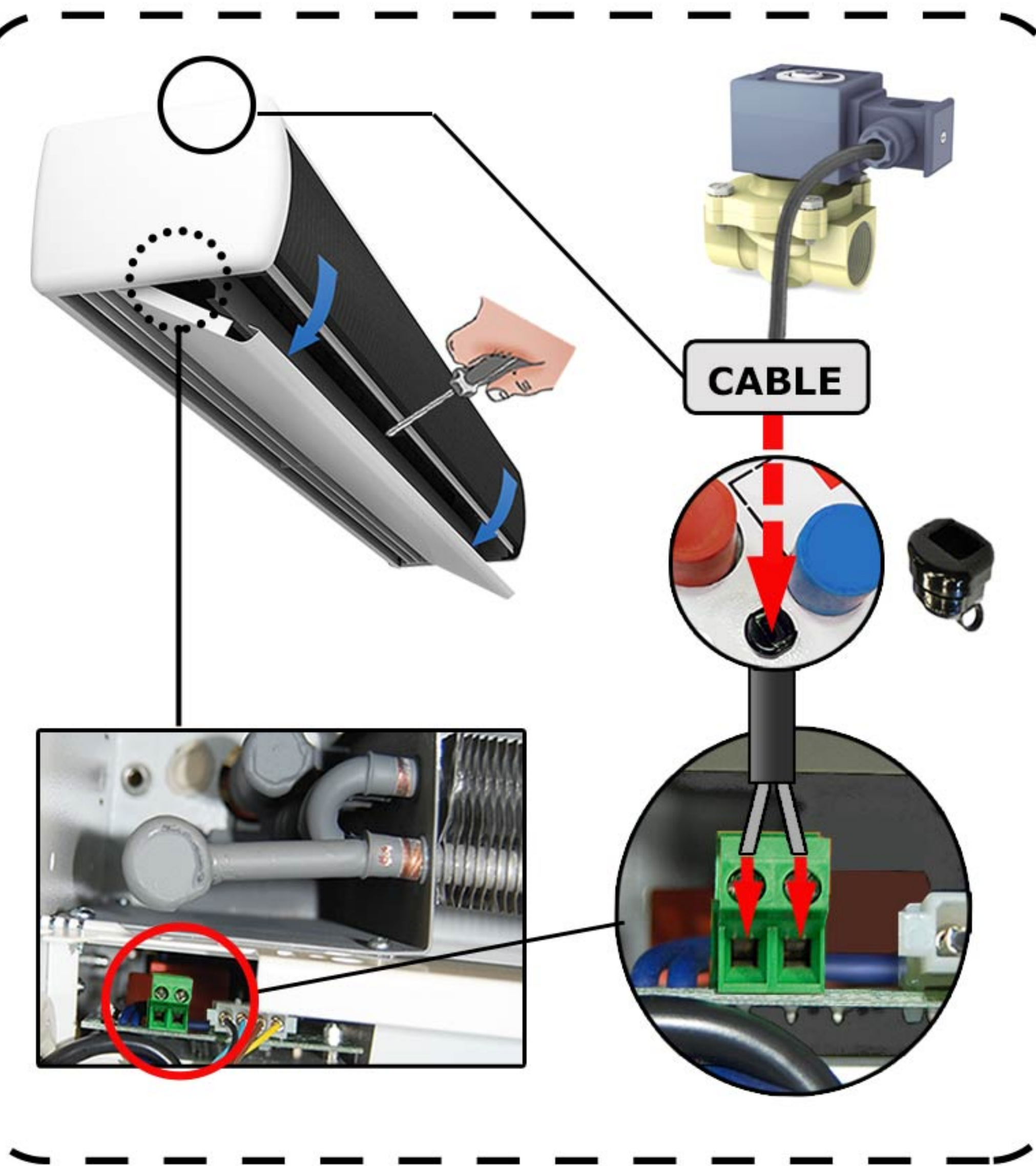
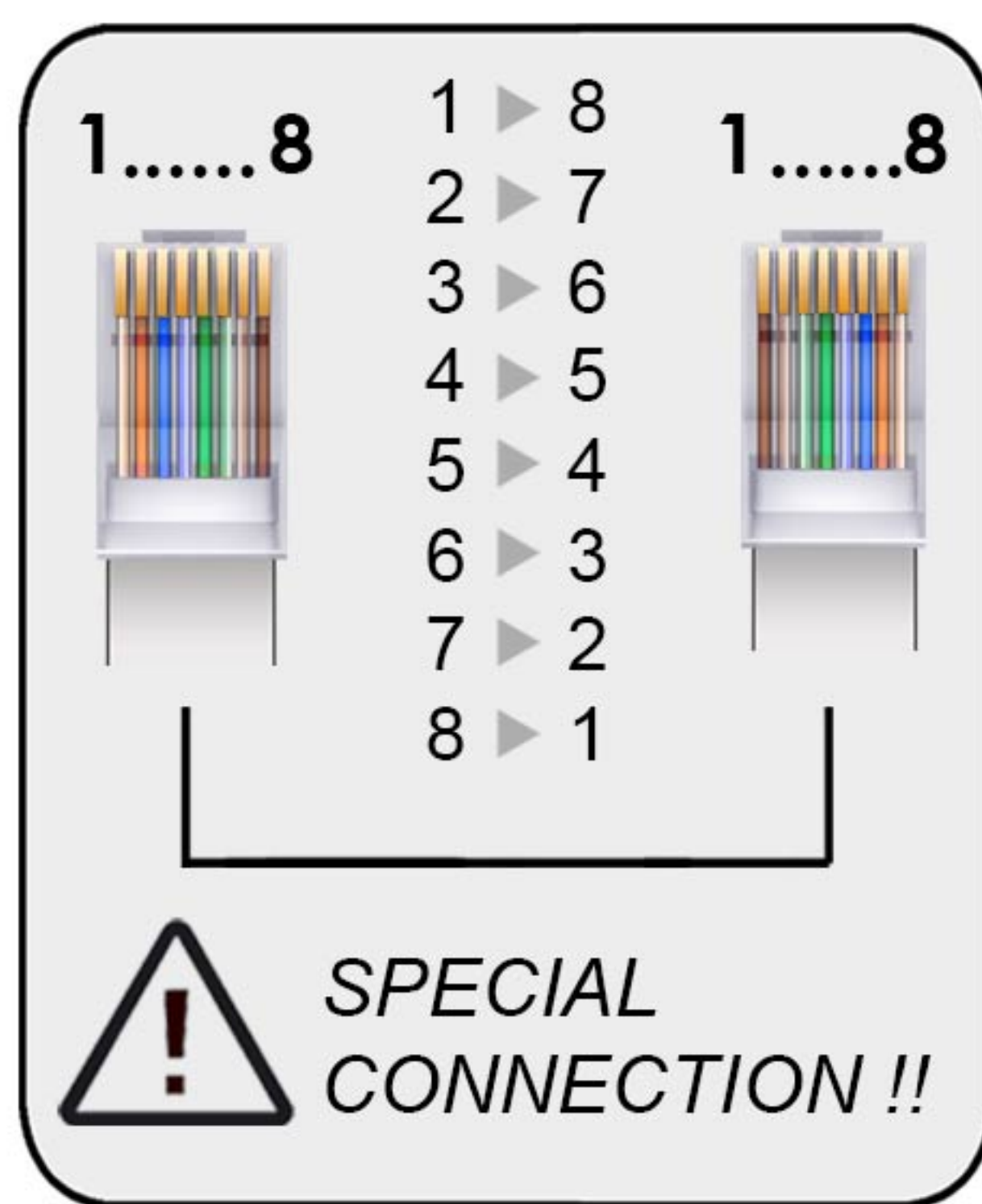


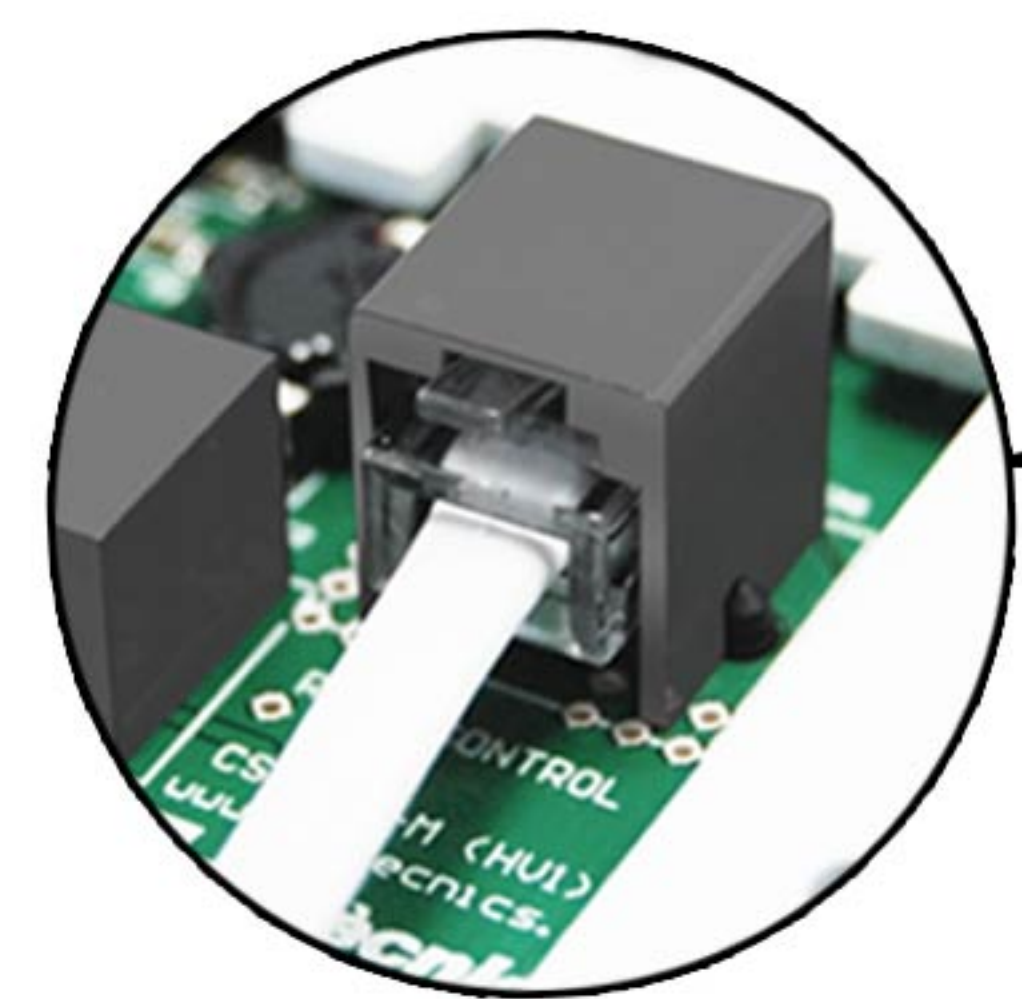
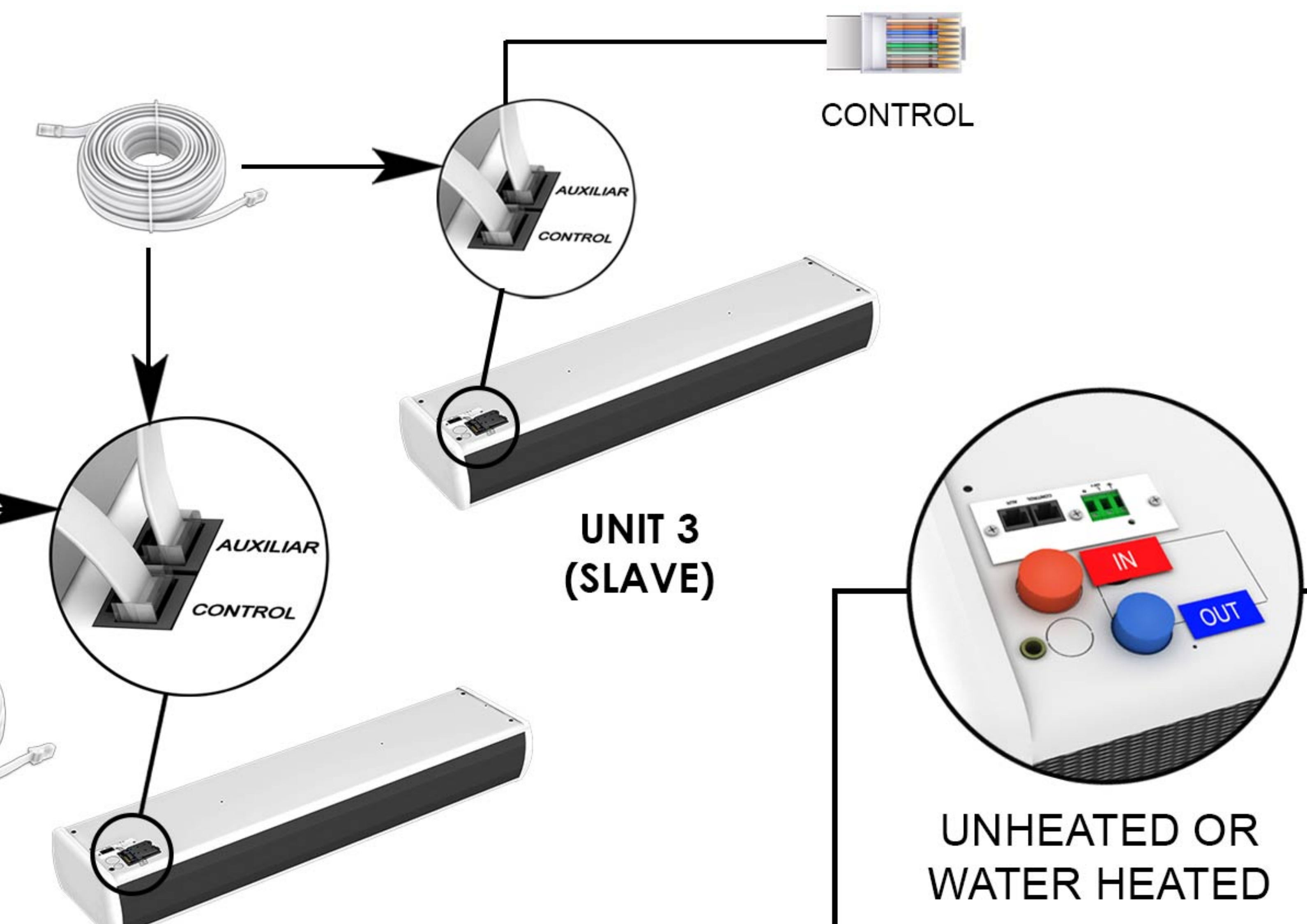
OPTIONAL: SOLENOID VALVE



8 PINS CONNECTOR RJ45

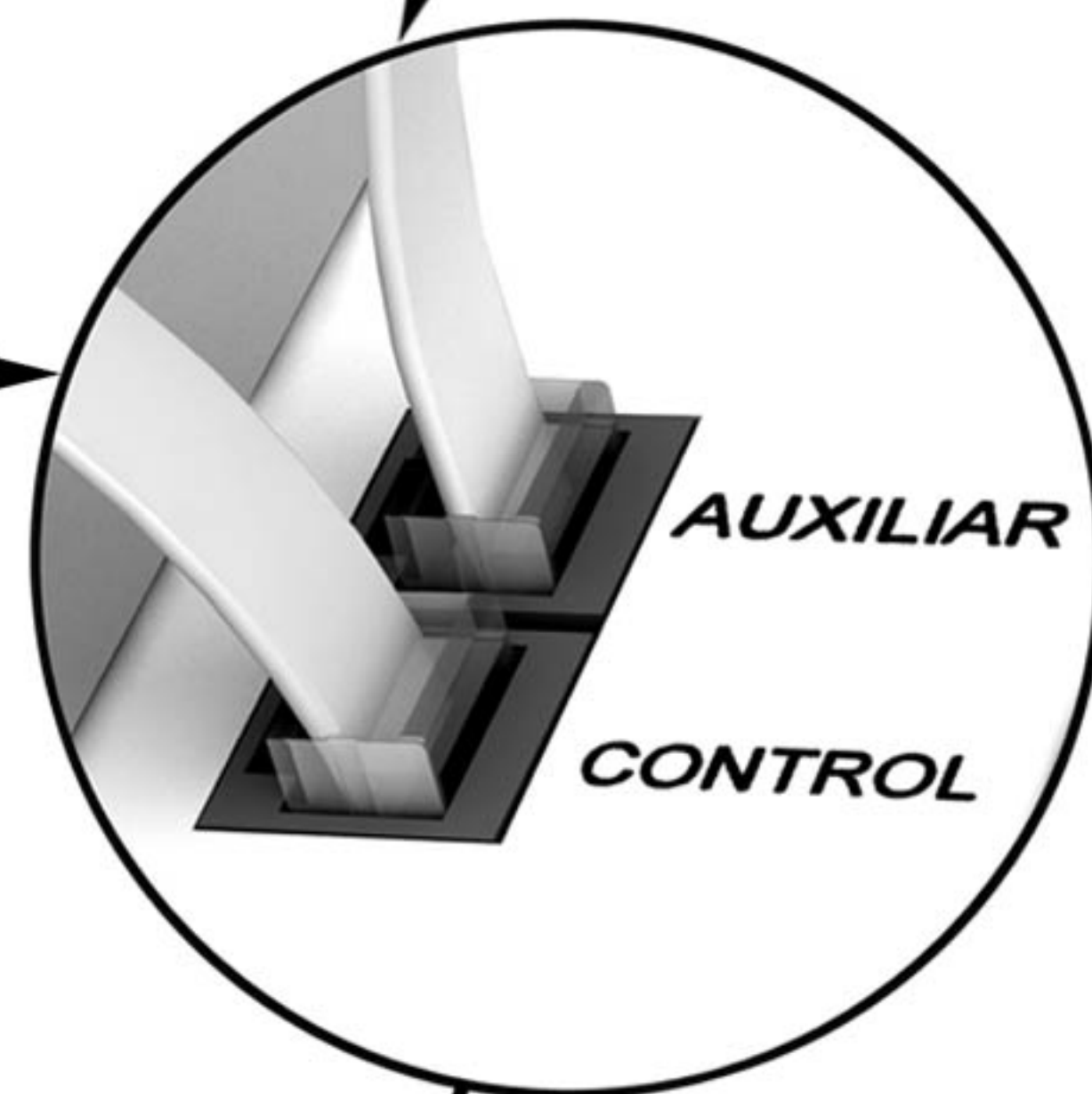


TO UNITS 4,5 ... UP TO 12



CONTROL

7 m CABLE



UNIT 2 (SLAVE)

UNIT 1 (MASTER)

Optima

Recessed Optima

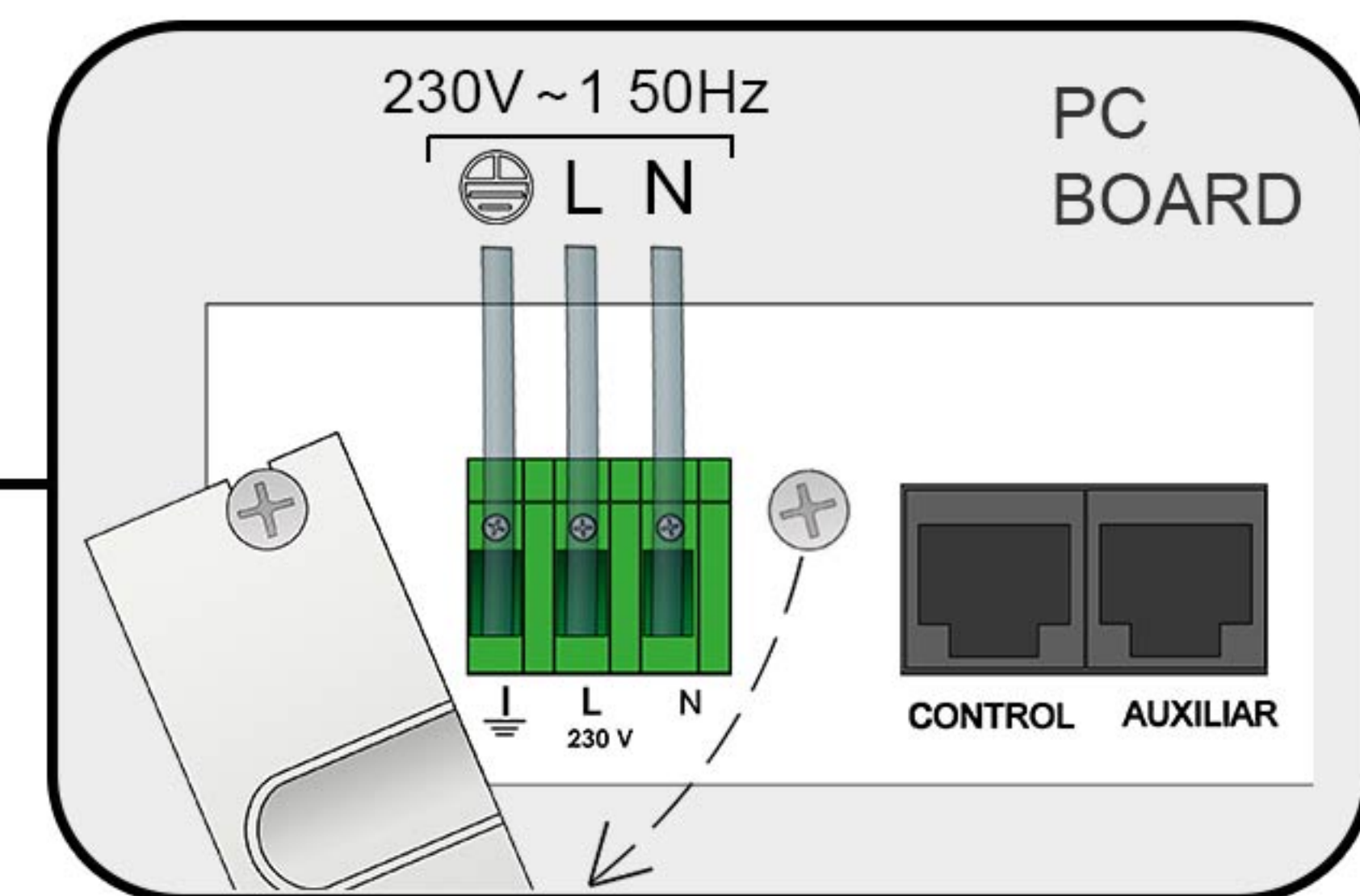


CLEVER

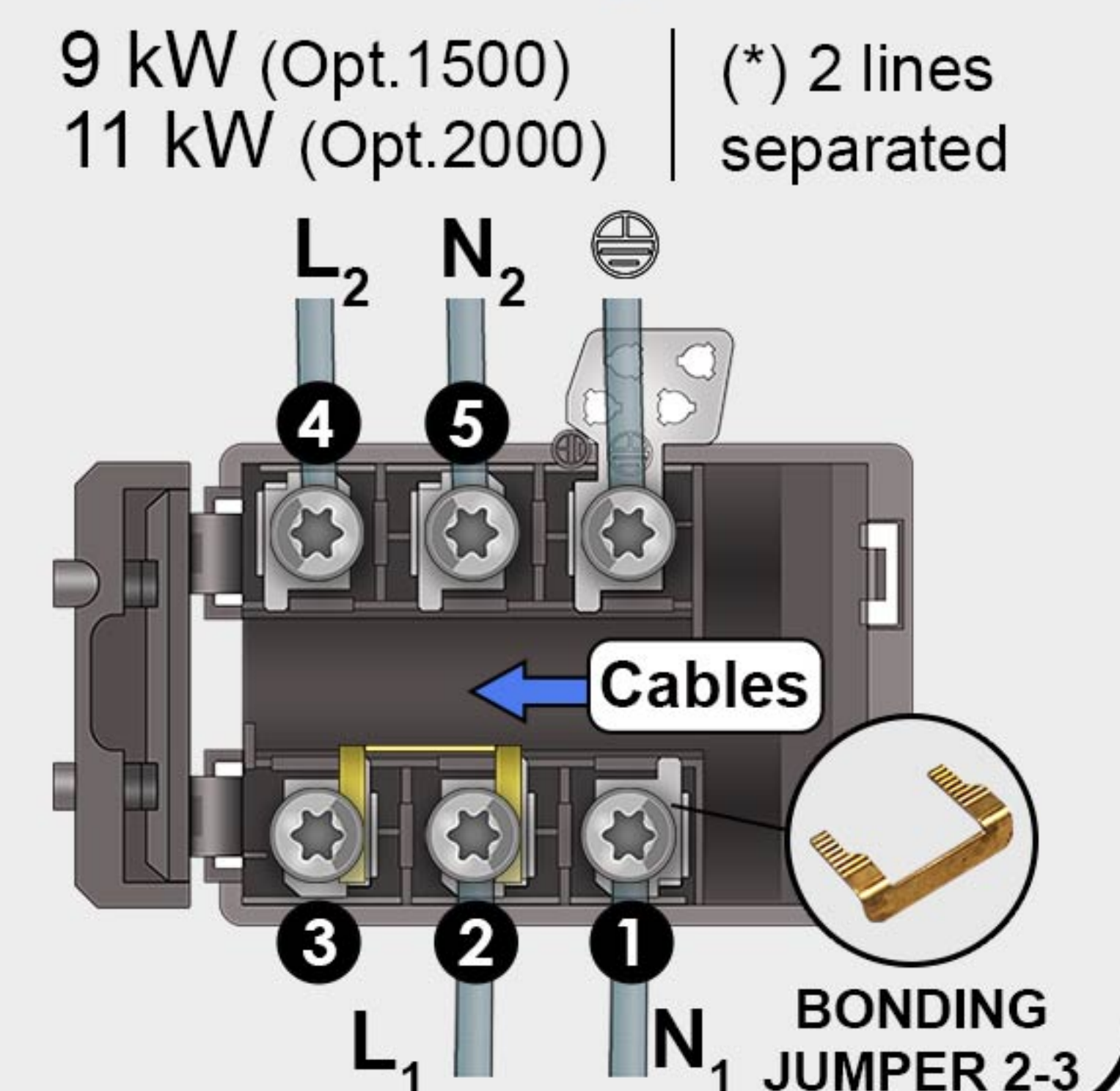
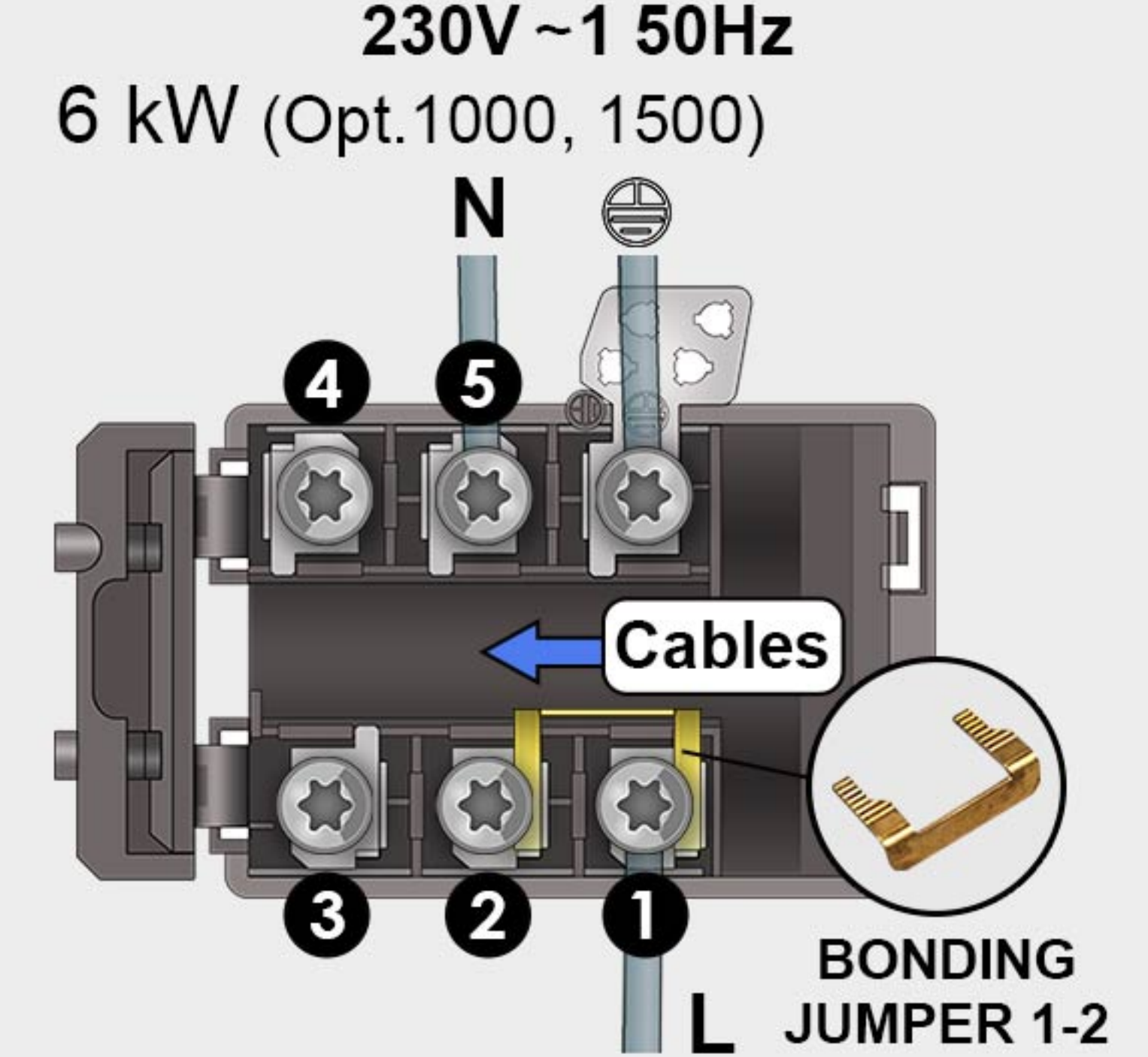


STANDARD

POWER SUPPLY



CONNECTION BOX 230V ~ 1 50Hz

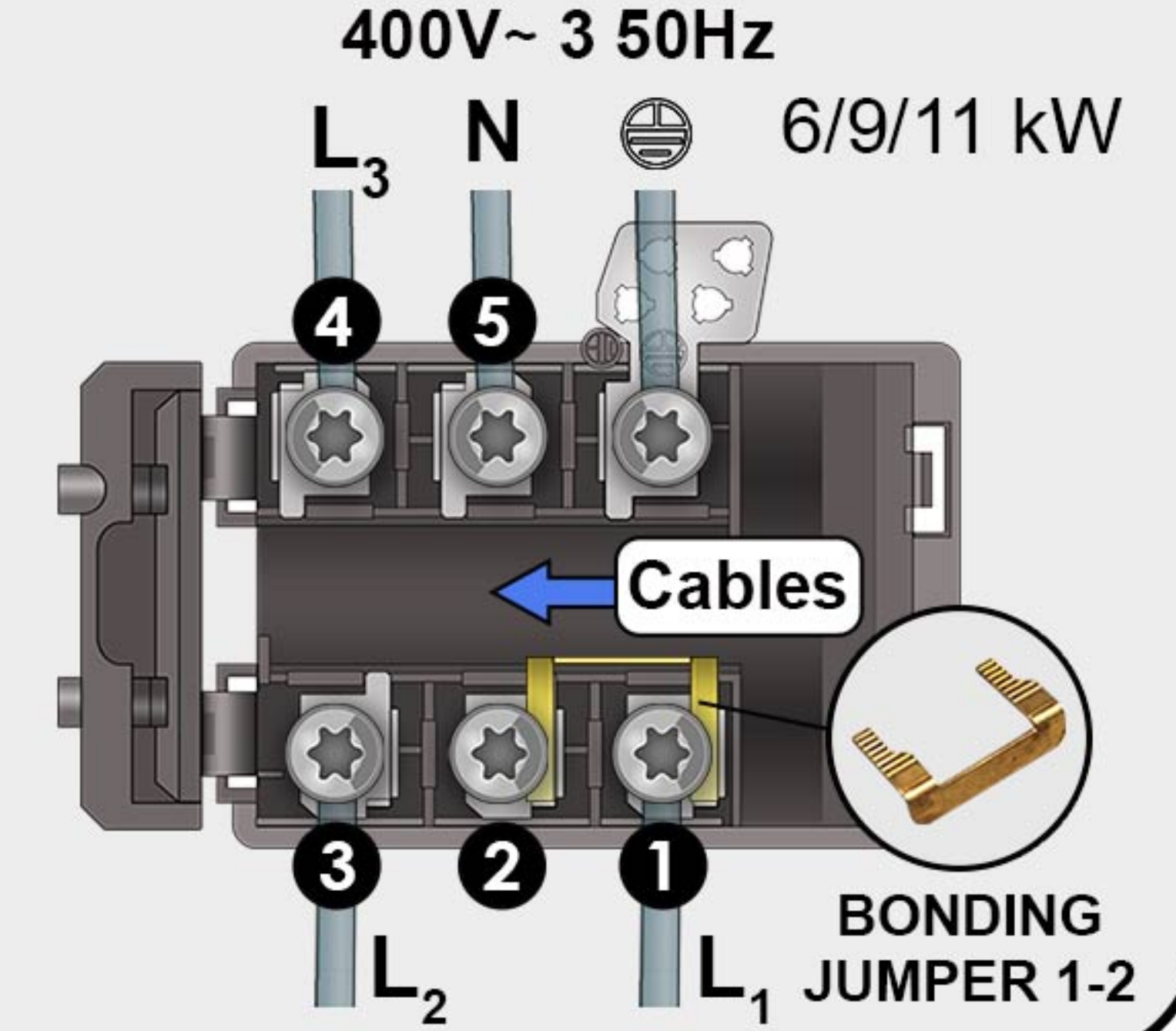


1~PHASE
230V ~ 1 50Hz

1~PHASE
230V ~ 1 50Hz

3~PHASE
400V ~ 3 50Hz

CONNECTION BOX 400V ~ 3 50Hz



6 kW (Opt. 1000, 1500)
9 kW (Opt. 1500)
11 kW (Opt. 2000)
6/9/11 kW

UNHEATED OR WATER HEATED

ELECTRICAL HEATING